

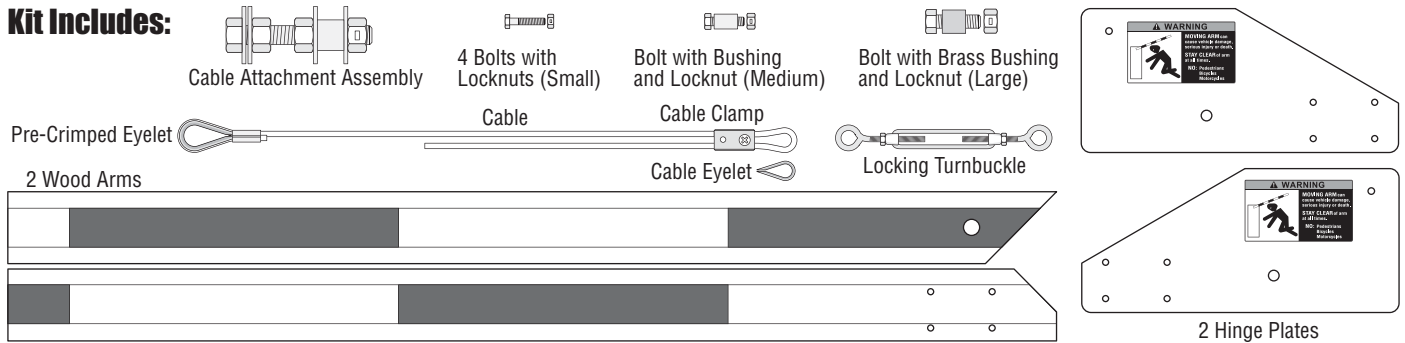
WOOD FOLDING ARM KIT

DoorKing Part Number

1601-084

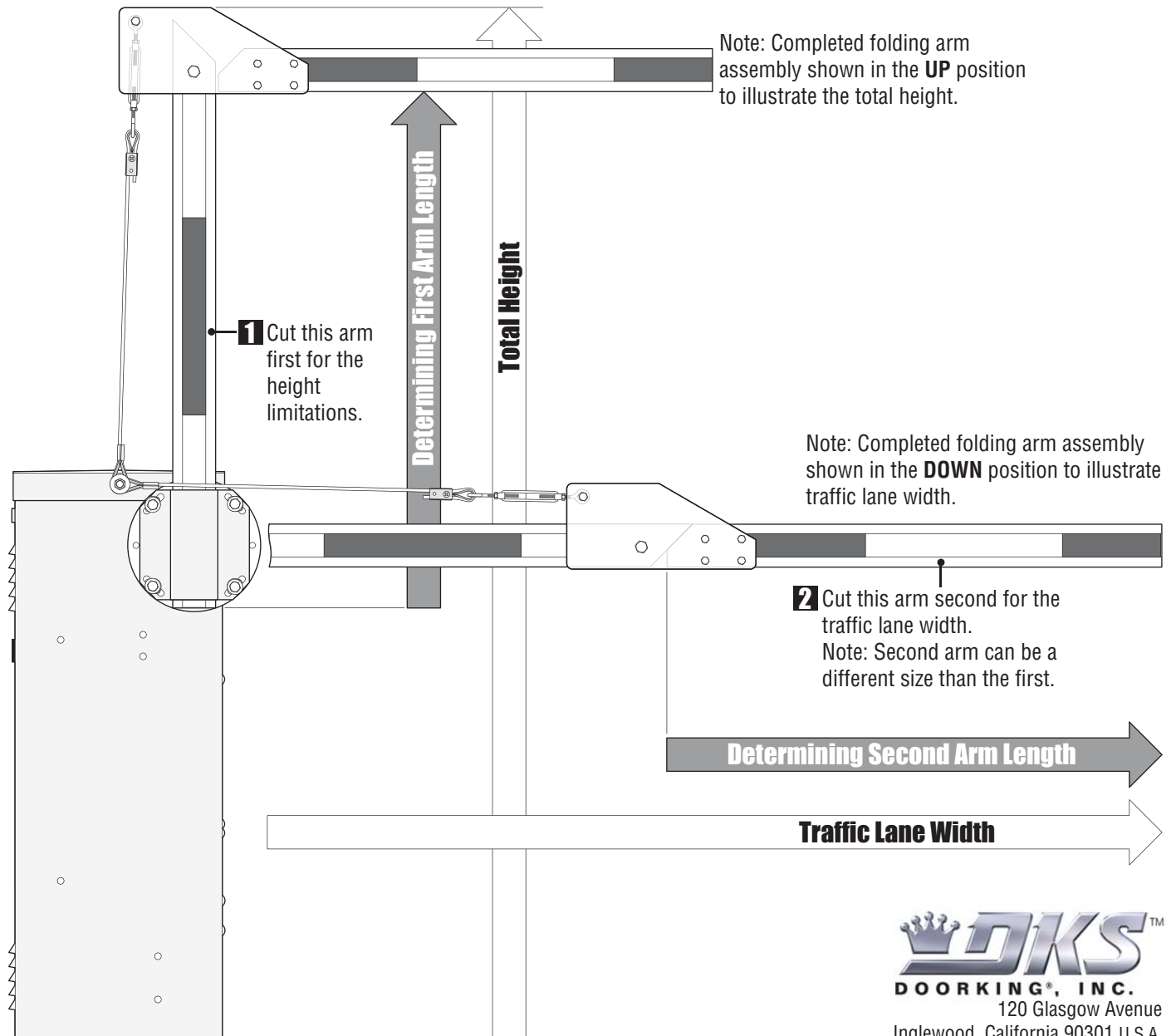
This kit is designed for the 1600 model barrier gate operators only. Recommended for low headroom applications.

Kit Includes:



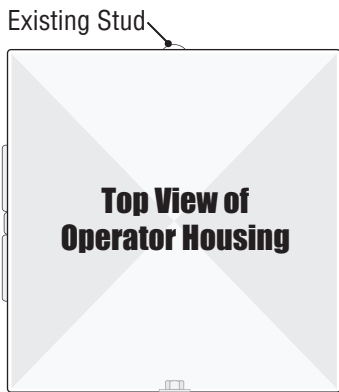
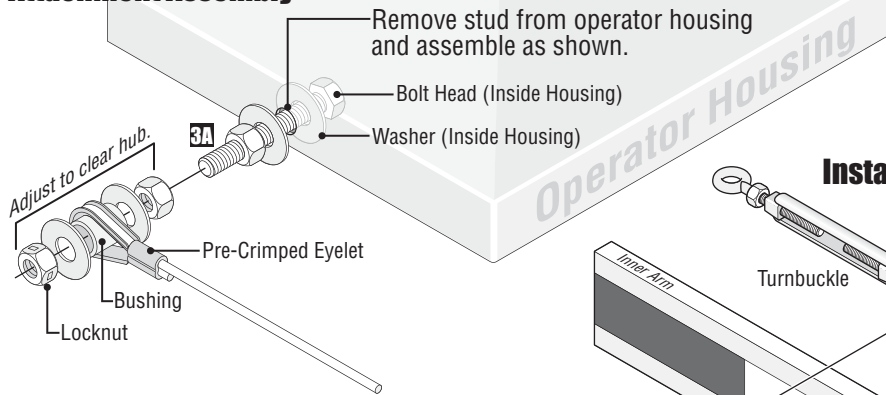
Installation

Cut Arms to Length

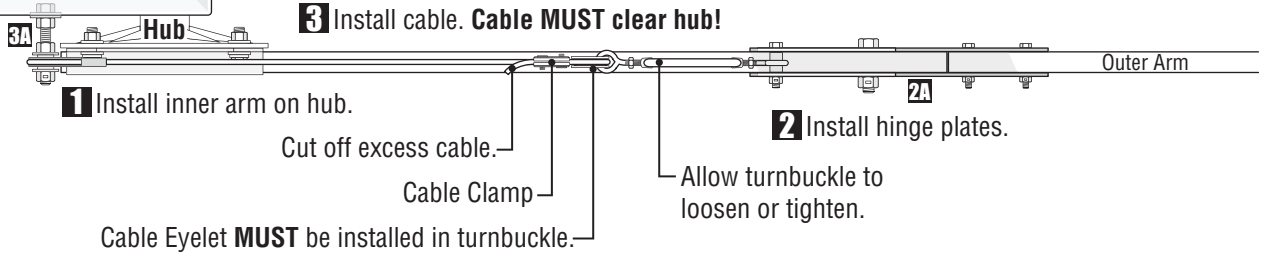
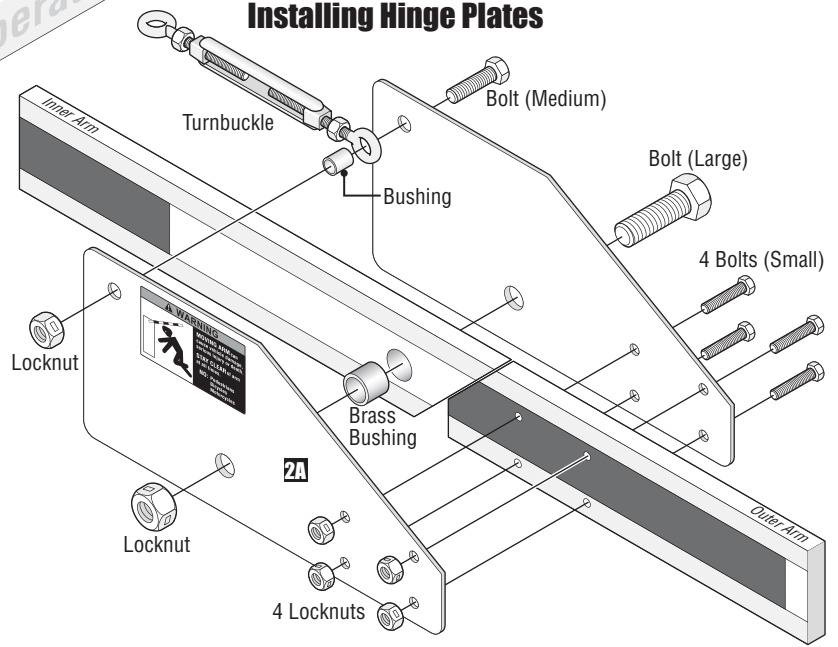


Installing Arms

Installing Cable Attachment Assembly

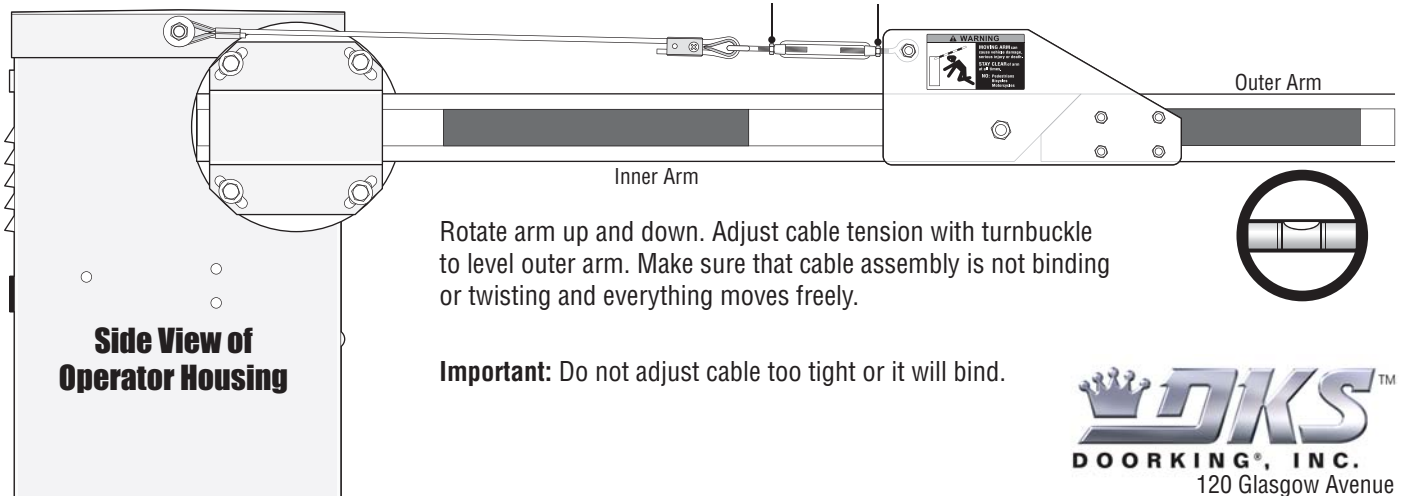


Installing Hinge Plates



Adjusting and Locking Cable Assembly

After adjusting cable tension, lock turnbuckle with nuts in position shown to prevent turnbuckle from rubbing against hinge plates when the arm is in the UP position.



Rotate arm up and down. Adjust cable tension with turnbuckle to level outer arm. Make sure that cable assembly is not binding or twisting and everything moves freely.

Important: Do not adjust cable too tight or it will bind.