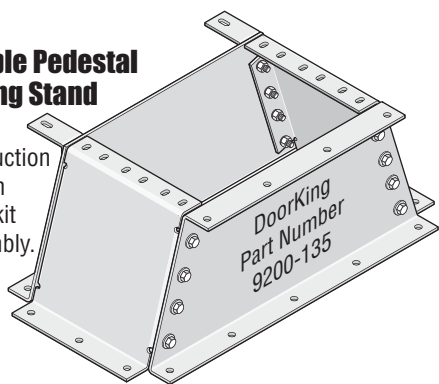


# QUICKSTART "BASIC" GUIDELINES FOR MODEL 9200 "FULL OPEN": MOUNTED ON THE PEDESTAL MOUNTING STAND

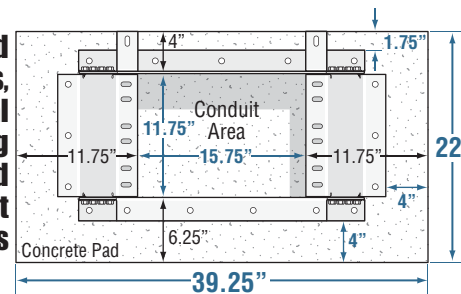
Fits on All 9200 Models.  
Standard with the 9230, 9235 and 9240 Models

## Assemble Pedestal Mounting Stand

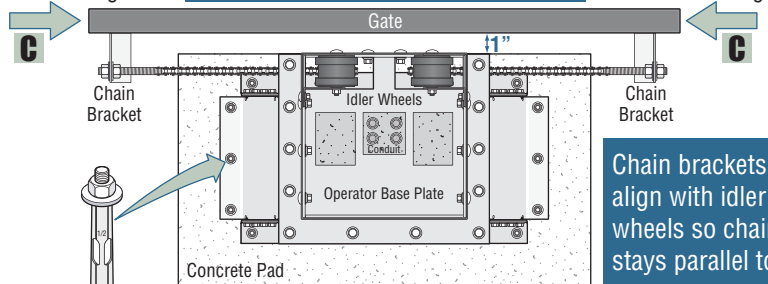
See instruction sheet with pedestal kit for assembly.



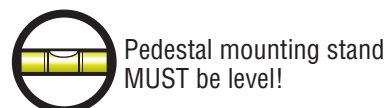
## Concrete Pad Dimensions, Pedestal Mounting Stand and Conduit Positions



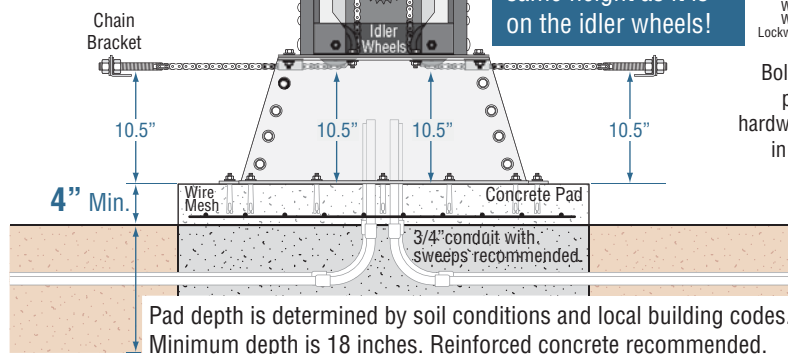
Opening direction OFF setting. **Operator MUST be parallel to gate!** Opening direction ON setting.



Attach pedestal stand with sixteen (16) 1/2" x 3" sleeve anchors (not supplied) after concrete pad has been poured and has cured.

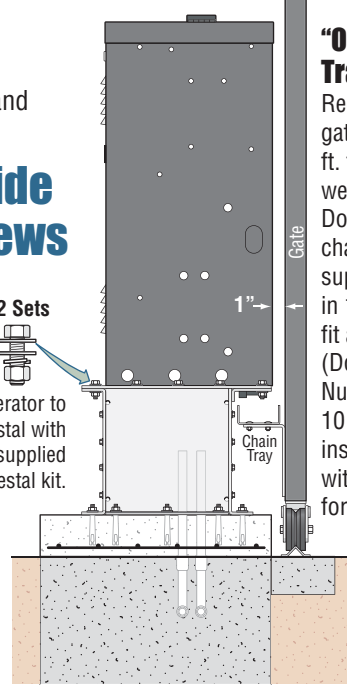


Chain brackets MUST be mounted so the chain remains the same height as it is on the idler wheels!

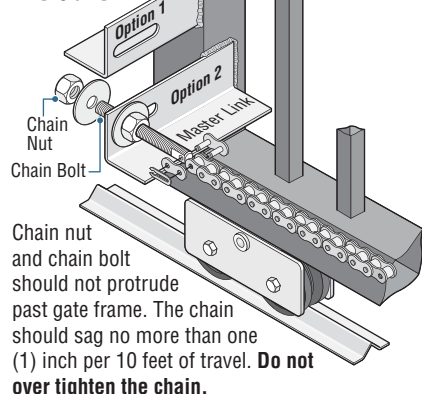


## Side Views

12 Sets Washer Washer Lockwasher Bolt operator to pedestal with hardware supplied in pedestal kit.



## Connect Chain to the Gate



## Limit Switches

With power OFF, push and hold the lock plate down where shown to adjust the Open and Close limit nuts. After adjusting the limit-nuts, be sure that the lock-plate is engaged in the slots on the limit-nuts to prevent them from rotating. The slow-down limits (Except for Model 9210) will move up or down 3/4 inch. **DO NOT** remove the slow-down limit assembly from the 3/4 inch slot and re-attach it in the longer slot on the partial open adjustment rail to gain further adjustment. **This will cause mechanical damage to the switch assembly when the operator is activated.** Turn power ON and activate the gate operator. Re-adjust the limit nuts as necessary for full-open and full-close gate travel. After you are satisfied with the gate limit settings, the speed control knob can then be adjusted on models 9220, 9230, and 9240 to personal preference. **Important: Please see manual before adjusting Model 9235 AC module dual adjustment.**

Copyright 2011 DoorKing, Inc. All rights reserved.

**Model 9200 is intended for installation only on sliding gates used for vehicles.**

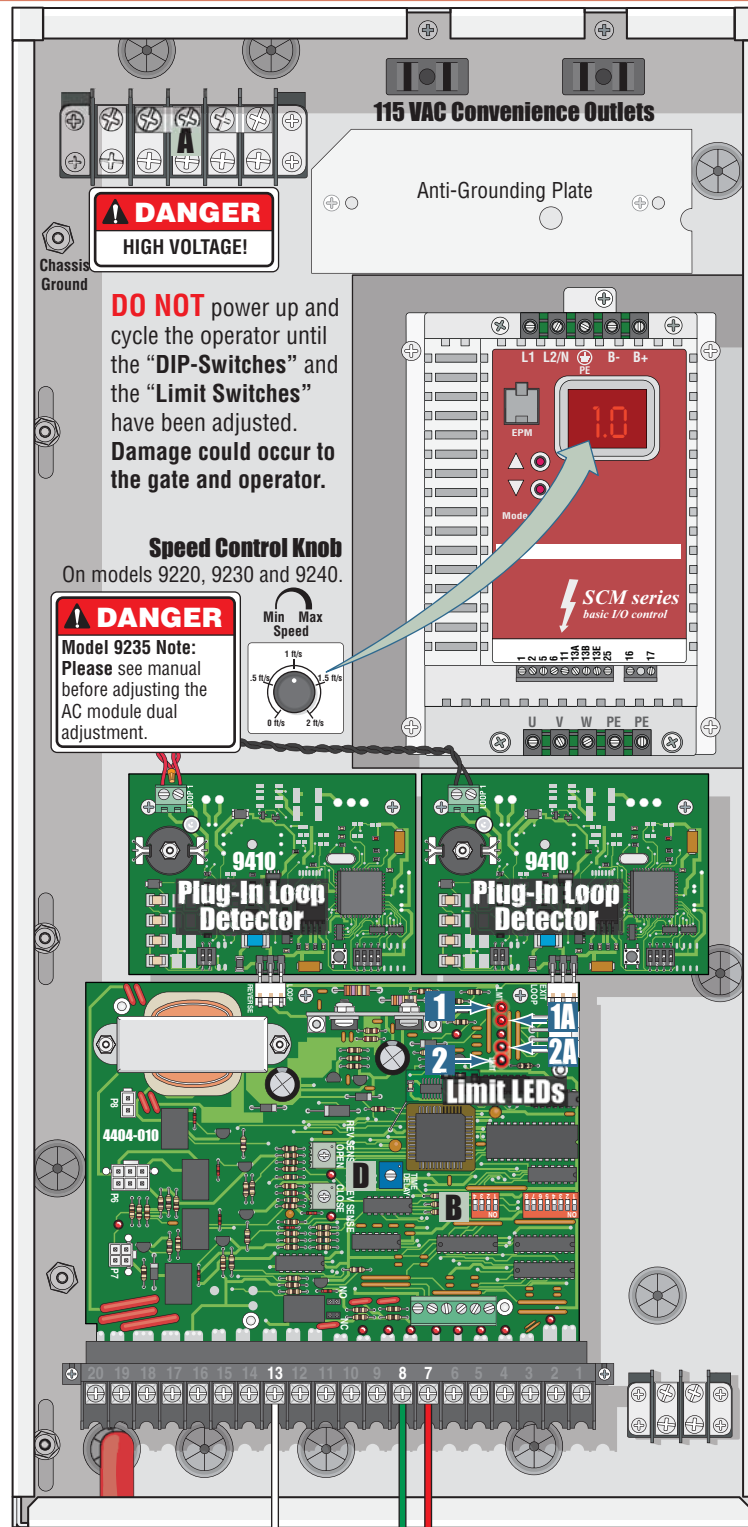
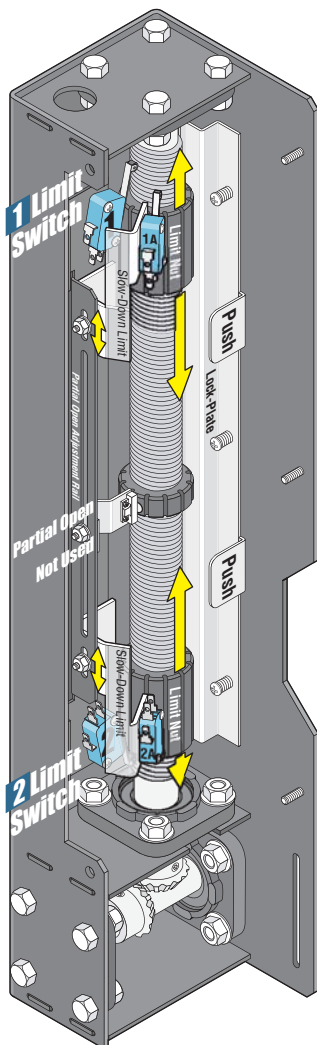
Pedestrians must be supplied with a separate access opening. For safety and installation instructions, please refer to the installation/owner's manual. **DO NOT** turn power on and make ANY adjustments to the Model 9235 before reading the installation/owner's manual. Serious injury could occur!

**Caution:** Never attempt to manually operate the 9200 until you have verified that power has been shut-off.

**Gain Access Inside Operator**

Remove the 3 locknuts inside the electronic box to swing box open.

**Move the idler wheels to the lower position.**



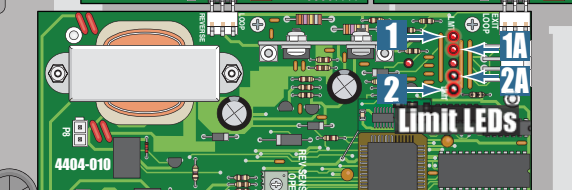
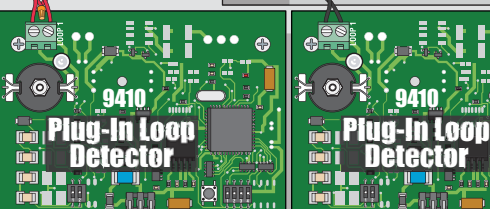
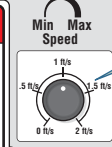
115 VAC Convenience Outlets

**DANGER** HIGH VOLTAGE!

**DO NOT** power up and cycle the operator until the "DIP-Switches" and the "Limit Switches" have been adjusted. Damage could occur to the gate and operator.

Speed Control Knob  
On models 9220, 9230 and 9240.

**DANGER** Model 9235 Note: Please see manual before adjusting the AC module dual adjustment.

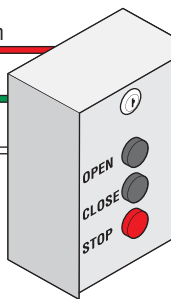


#7 Red Full Open

#8 Green Close

#13 White Com

**Important:** Controls must be far enough from the gate so that the user is prevented from coming in contact with the gate while operating the controls.

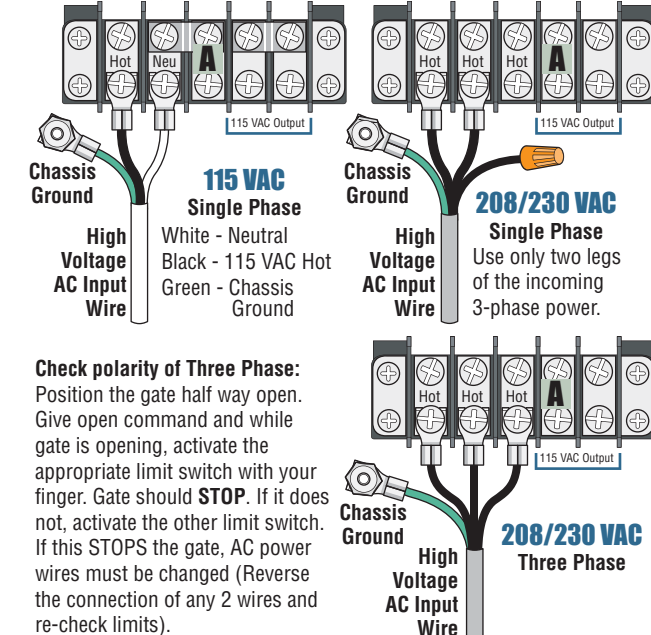


120 Glasgow Avenue  
Inglewood, California 90301  
U.S.A.

## High Voltage Connection

**GATE OPERATOR MUST BE PROPERLY GROUNDED!!**

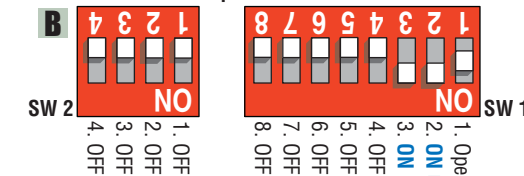
Tip: It is recommended that a surge suppressor be installed on the high voltage power lines.



**Check polarity of Three Phase:** Position the gate half way open. Give open command and while gate is opening, activate the appropriate limit switch with your finger. Gate should STOP. If it does not, activate the other limit switch. If this STOPS the gate, AC power wires must be changed (Reverse the connection of any 2 wires and re-check limits).

## DIP-Switches

SW 1 and 2 are Upside-Down on Circuit Board.



## Auto-Close Timer



## Plug-In Loop Detectors

Not included - Refer to the Installation/Owner's manual AND Loop Information Manual (available from [www.dkaccess.com](http://www.dkaccess.com)) for more information on loops and plug-in loop detectors. **Important Note:** DoorKing highly recommends that loops and loop detectors are installed with this slide gate operator. A loop detection system will prevent the gate from automatically opening or closing on a vehicle when it is in the gate's path.

## 3-Button Control Station

Not included - Use ONLY DoorKing's 3-button control station. Stand alone box shown. Stand Alone Box (Exterior) - P/N 1200-006 Interior (fits in single gang box) - P/N 1200-007

9240-066-B-1-11