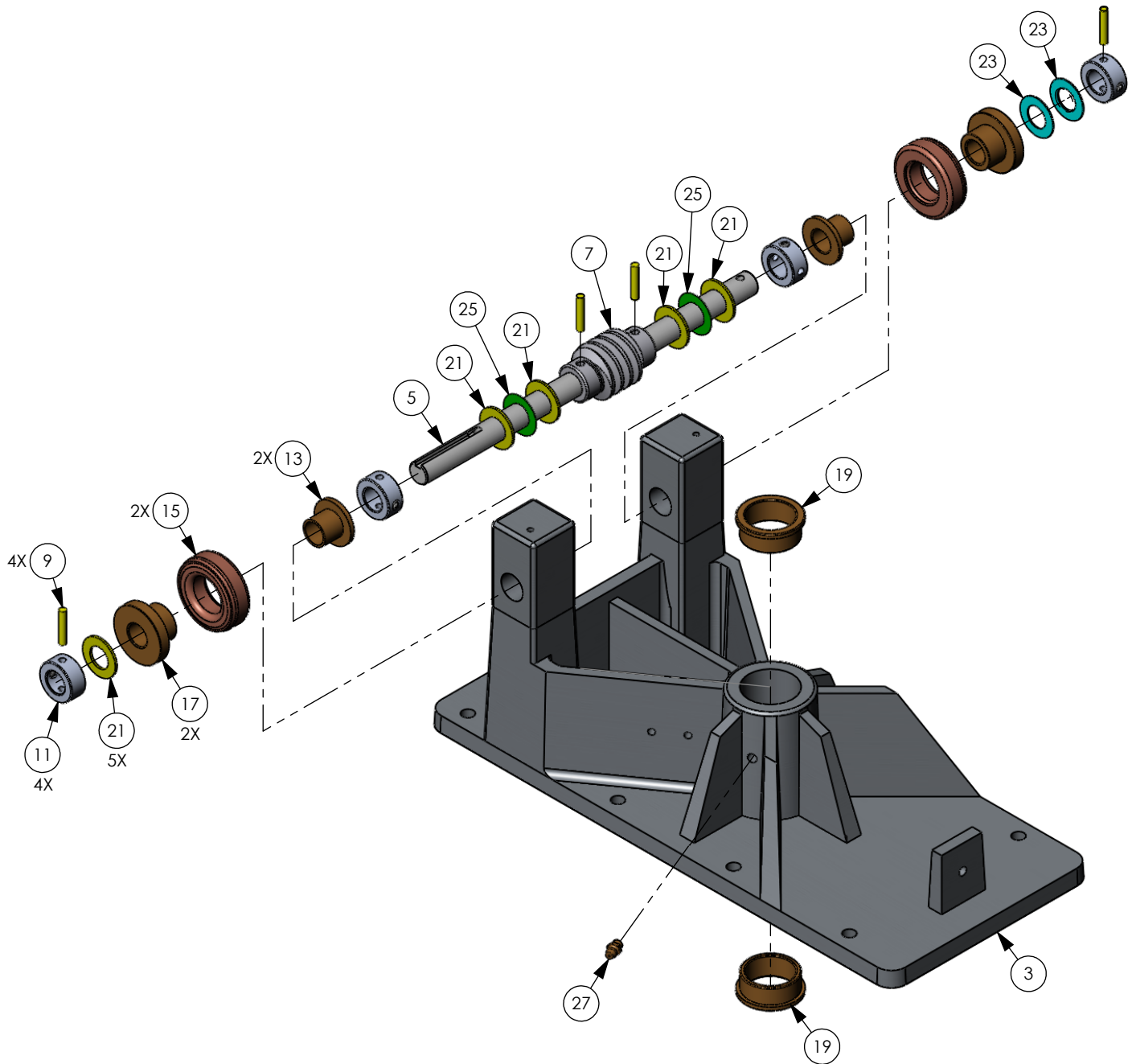


EO	REV	DESCRIPTION	Drawn	APPR
---	B	Revised & Redrawn on SolidWorks: Added Item 1 (IPB) & 19.	Sal 05/22/08	D.C. 05/23/08



1. See attached reference sheet for BOM;
Reference Movex 6300-042 Rev B.

Notes: Unless Otherwise Specified.

PROPRIETARY AND CONFIDENTIAL		NAME	DATE
THE INFORMATION CONTAINED IN THIS DRAWING IS THE SOLE PROPERTY OF Door King. ANY REPRODUCTION IN PART OR AS A WHOLE WITHOUT THE WRITTEN PERMISSION OF Door King IS PROHIBITED.		Sal	05/19/08
DRAWN			
CHECKED			
COMMENTS:			



IPB-Housing Assy, 6300-042
Swing Gate Operator

SIZE	DWG. NO.	REV.
A	6300-842	B
Scale: None		SHEET 1 OF 2

Item	Part Number	Qty	UM	Description	Rev
1	6300-842	1	EA	IPB-Housing Assy Swing Gate Optr	B
3	2600-768	1	EA	Housing-Cast Model 630/6300	
5	2600-165	1	EA	Shaft Cross Keyed 630	
7	2600-287	1	EA	Worm 2 Shoulder Model 6300	
9	2600-032	4	EA	Spirol Pin - 3/16" D x 1" L SS	
11	2600-088	4	EA	Collar - 5/8"	
13	2600-049	2	EA	Bearing Brnze 3/4ODx5/8IDx3/4L	
15	2600-666	2	EA	Bearing Thrust Bearing 1.015ID	
17	2600-633	2	EA	Bearing Support Crossshaft	
19	1601-032	2	EA	Bearing 1 1/2 OD x 1 1/4 ID x 5/8 L	
21	2600-090	5	EA	Shim-1 1/8 OD x 5/8 ID x 1/16 THK	
23	2600-091	2	EA	Shim-1 1/8 OD x 5/8 ID x 1/32 THK	
25	2600-092	2	EA	Shim-1 1/8 OD x 5/8 ID x 1/64 THK	
27	2600-178	1	EA	Grease Fitting-(Zerk Fitting)	