



DoorKing Internet-Modem Server Program Subscription Plans

1. DoorKing IM Server program	page 1
2. How the Subscription Plan works	page 2
3. Annual Subscription Plan	page 3
4. Monthly Subscription Plan	page 4
5. Using the IM Server	page 5

DoorKing is in the process of transitioning to our new Internet-Modem Server. Beginning in Jan 2012 the IM Server will be available on a subscription plan basis. For more details, please visit our connection website at: www.doorking.com/connect .

This site offers a wealth of reference information related to programming your DoorKing entry systems, with training videos and document downloads, including:

- **Changes to the Internet-Modem Server**
- **How to Register and Activate your systems**
- **How the subscription plan pricing works**
- **7 Methods of Connectivity. This shows alternatives for programming your DoorKing entry systems without using the fee based IM Server.**

Please visit the IM Server website: <http://dksdb.dksoftware.com/UserLogin.aspx>

DoorKing Internet-Modem Server

2. How the Subscription Plan works.

- **NOTICE: If you program your systems using Modem to Modem, RS-232 or Network connections, there is no requirement to register. There are no fees associated with these connection formats.**
- **The Internet Modem (IM) Server is a subscription based service (beginning Jan 1, 2012). Billing is available on either an Annual or Monthly plan.**
- **Payments are made automatically using a Credit Card or E-Check payment.**
- **The Annual billing also provides a Manual Payment Option allowing payment using a “Paper Check” (\$15 processing fee applies).**
- **Subscription Fees are based on the number of residents in the system data base. This flat fee allows unlimited Connections to the system.**
 - 1 to 100 Residents \$1.95 / month
 - 101 to 250 Residents \$3.95 / month
 - 251 to 500 Residents \$5.95 / month
 - 501 + Residents \$8.95 / month
- **The monthly subscription is usually less than 2 cents per resident per month.**
- **You can estimate the number of names in your database to help you get an idea on what the charges will be. However, the fees will be based upon the actual number of name when you transfer data.**
- ***Fees are not based upon how many times you transfer data in a month.*** You can send data as many times as you require.
- ***Fees are not based upon how many different people connect to the Entry System.*** Once a system is activated by one “User ID” other staff members or service personnel can Send or Receive data without activating the systems.

DoorKing Internet-Modem Server

3. Annual billing Plan:

➤ up to 100 Residents	\$23.40 / Yr
➤ 101 to 250 Residents	\$47.40 / Yr
➤ 251 to 500 Residents	\$71.40 / Yr
➤ 501 + Residents	\$107.40 / Yr

- **Billing is based upon data transfer history over past 12 months.**
- **Billing is prepaid for year. There are no prorated charges or credits if resident count changes during the year.**
- **Renewal subscription is based upon data transfer history for current year.**
- **Multiple systems added to your account will be prorated to generate a common renewal date**
- **If you take advantage of our special Early Activation offer, then your effective date for the Subscription based service will not begin until April 1st (activation prior to Nov 30th) or March 1st (activation prior to Dec 31st) .**
- **Processing Payments:**
 - **Payments are not due until the beginning of your Subscription Period.**
 - **An Email will be issued at your Effective Date, which will contain payment instructions and a copy of your active invoice.**
 - **Credit Card or E-check: Payment will be charged to your account.**
 - **Manual “Paper check”:** Payment should be mailed, along with copy of invoice, to DoorKing within 30 days of effective date. (\$15 processing fee added to manual payments)
- **Renewal date will be 12 months from the original effective date.**

Special Early Activation Offer Extended!

Register and set up your billing prior to Nov 30th, and receive 3 Months Free in 2012. Access to the IM Server in Jan, Feb and Mar will continue to be complimentary. Subscription Based service will begin begins April 1st. No payments or charges due till April 1st.

DoorKing Internet-Modem Server

4. *Monthly billing Plan:*

➤ 1 to 100 Residents	\$1.95 / month
➤ 101 to 250 Residents	\$3.95 / month
➤ 251 to 500 Residents	\$5.95 / month
➤ 501 + Residents	\$8.95 / month

- **Billing is based upon highest resident count transferred each month.**
- **Billing may vary throughout year if you have changes in the number of residents at your facility.**
- **Multiple systems added to your account will be prorated to generate common billing monthly date.**
- **Effective date is 1st of month, or 30 days from date of first data transfer. Payment will be charged to your account at end of month.**
- **If you take advantage of our special Early Activation offer, then your effective date for the Subscription based service will not begin until April 1st.**
- **Processing Payments:**
 - **Payments are not due until the beginning of your Subscription Period.**
 - **An Email will be issued at your Effective Date, which will contain payment instructions and a copy of your active statement.**
 - **Credit Card or E-check: Payment will be automatically charged to your billing account at the end of each month, based upon activity within the month.**
 - **If there is no activity in the month, then fees are based upon month of most recent activity.**

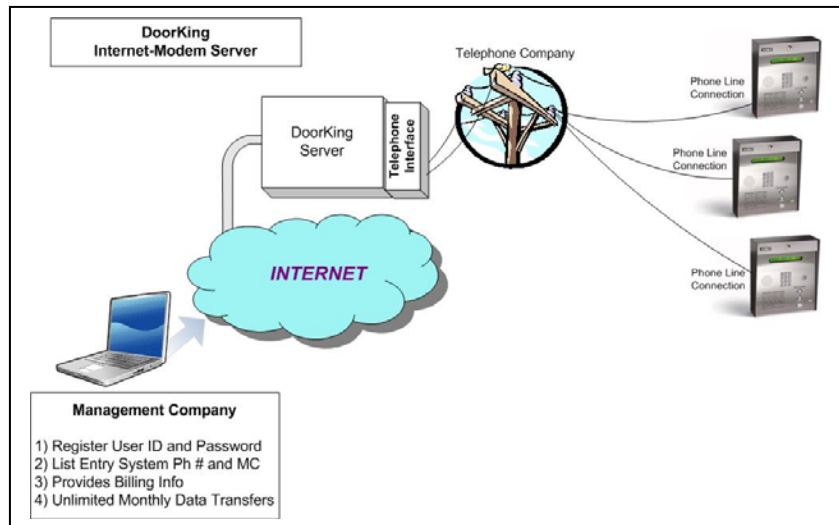
Special Early Activation Offer Extended!

Register and set up your billing prior to Nov 30th, and receive 3 Months Free in 2012. Access to the IM Server in Jan, Feb and Mar will continue to be complimentary. Subscription Based service will begin begins April 1st. No payments or charges due till April 2012.

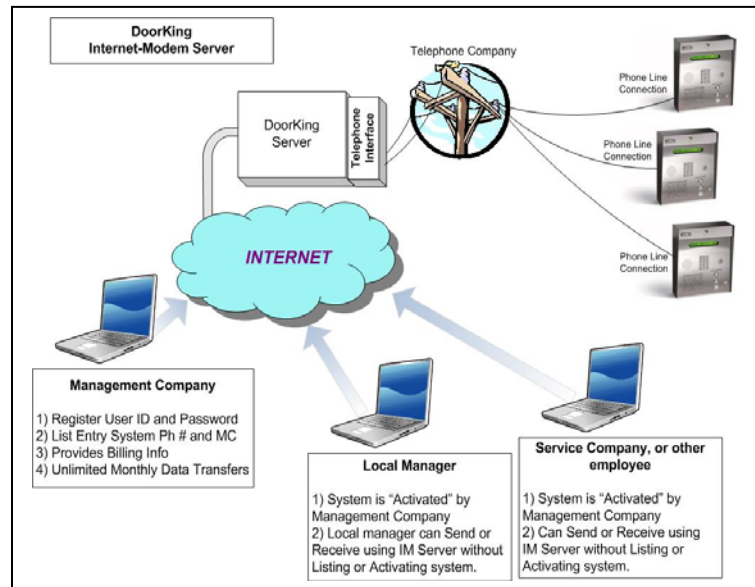
DoorKing Internet-Modem Server

5. Using the IM Server:

- Each Phone Entry System that will be programmed through the IM Server needs to be activated. Even if they share a phone line or are sharing data. Activation is by Phone Number + Master Code identity.



- Only 1 User can activate a specific Phone Number / Master Code. Once a system has been activated, then other User ID's can connect with the system without listing the phone number or paying subscription fees.



Visit www.doorking.com/connect for more information, training videos, FAQ's and more.

Should you have any questions on this, please feel free to contact DoorKing Technical Support.